

CAR ENGINE SOUND Simulated System

Thank you for purchasing the G.T POWER Car Engine Sound Simulated System. This unit has powerful sound synthesizing unit and high-power amplifier, combining with acoustic design optimized speaker, it can brings you a perfect and realistic sound simulation effect. Please read this manual completely and carefully prior to use.

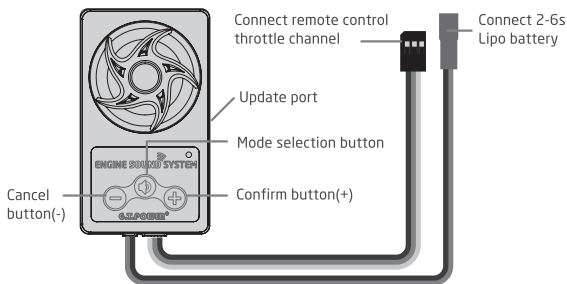
PRODUCT LIST

Main control box	x1pc
Power connecting line	x1pc
Double sided adhesive tape	x2pcs
Instruction manual	x1pc
Y cable	x1pc

SPECIFICATIONS

Power amplifier	Input voltage: 7-25V Max. current: 2A
Controller connecting line	Input voltage: 4.8-5.3V Max. Current: 0.5A
Audio output power	Max. 10W
Sound box size	Line length 20cm 2.0jst-XH connector Length, width and height: 80*45*30mm

WIRE DRAWING



DOS AND DON'TS IN USE

- Make sure the correct wire connection and power supply as mentioned in the instruction manual, and ensure stable and safe installation.
- Low voltage alarm: when the speaker power supply voltage lower than 6V, the sound system will make a continuous beep sounds.
- Never cover the speaker's vibration module, keep speaker well ventilated.
- Keep the speaker volume to the lowest when first start or reboot the system, in case cause any damage to the speaker.

- Please do not put strong magnetic and interference items around the speaker.
- The remote controller must be calibrated when first use this product. When change remote controller type, you need to re-calibrate too.

OPERATION METHOD

1 Normal mode

Under normal mode, the simulator is stopped working. After power on, slightly move the throttle forward, the engine starts. After finished playing the throttle start sound, the engine will make a sound that matches the engine speed according to the throttle size.

When engine sound started, shortly press the confirm button to increase the volume, and shortly press the cancel button to reduce the volume.

When throttle in the middle position for 5 seconds, the engine will shut off automatically.

2 Calibration mode

- Hold down the confirm button till hear one continuous beep sound, enter into calibration mode.
- When move the throttle pole to the middle position, shortly press confirm button, after hear one beep sound, finish middle position calibration.
- Move the throttle pole to the maximum forward throttle position, shortly press confirm key, after hear one beep sound, finish the maximum forward throttle position calibration.
- Move the throttle pole to the maximum reversing position, shortly press confirm key, after hear one beep sound, finish the maximum reversing throttle position calibration.
- When all the above calibration finished, the speaker will make a beep sound to prove calibration success. If failed, the speaker will make 3 continuous beep sound, you have to re-calibrate.
- In any circumstances under calibration mode, you can through holding down the cancel button to end the calibration mode and enter into the normal mode along with 3 continuous beep sound

3 Sound effects selection setting

- Under normal mode, hold down the select key to enter into sound effects selection mode. After two beep sound, you will hear the auditioning sound effect. There are up to 58 kinds sound effects for your selection.
- You can through shortly press confirm button and cancel button to choose sound effects group. You can preview the selected sound effects after each adjustment, click the select button to confirm or exit the sound selection mode.

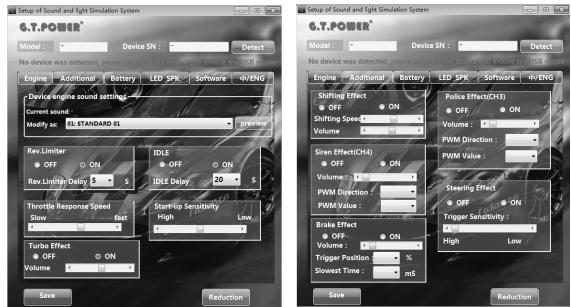
USB SETTING

1. This unit support on-line update service. You can visit our website <http://www.gt-rc.com/nr.jsp> to download the updated software. You also

CAR ENGINE SOUND Simulated System

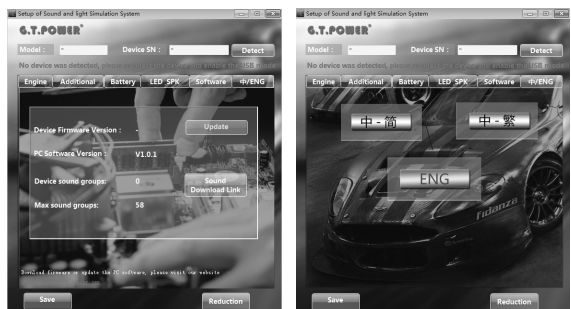
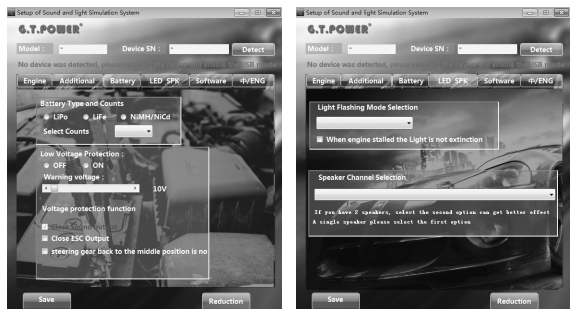
can through connect your device to computer and open the SD card to find the factory computer terminal software. (File name: RC_Vehicle_simulator_1.0.0.msi), double click to start install.

- After downloaded and finished software install, connect the device to the computer, hold down cancel button, enter into USB mode. Open the 'Vehicle Simulator System' software, you can start to set modes of the engine sound, special function, battery, car lights and horn. You can visit our website to check if have any latest device hardware and software to update to get the newest function. (Computer terminal software setting interface shown as below)
- When in the process of updating device firmware causing the device failed to work properly, you can hold down the mode select button and keep the device power on, then open the computer terminal software to detect the recovery mode, use its firmware updating function to re-update firmware.



SOFTWARE FUNCTION INTRODUCTION

- Engine sound effects setting:** This has the same effect through computer terminal software to update engine sound effects and through mode selection button to update engine sound effects manually. The former is more convenient and intuitive, the latter can manipulate when computer is not available.
- Automatic start and stop:** This function is when you start this sound effects system, if the throttle is in the middle position, the car is stationary and the engine is at idle state, sound system will Self shutdown after delay. Only when you touch the throttle again, will restart the engine. You can choose shutdown this function. When shutdown this function, in any circumstances, the system will remain in working condition all the time as long as the engine is start
- Start sensitivity:** Lower sensibility can prevent slightly touch remote controller throttle pole accidentally caused improper start up of device. If you found your device sound effects start up time is not synchronize with the car engine start up time, you can readjust it through this function.
- Brake trigger time:** During the time when move throttle from higher than brake trigger position to lower than middle position, trigger brake sound effect, beyond this time period, will not trigger brake sounds.



WARRANTY AND SERVICE

We warrant this product for a period of one year (12 months) from the date of purchase. This guarantee covers any material or design defects that are present at the time of purchase. During that period, we will repair or replace free of charge any unit that is determined to have failed as a result of those causes. This warranty does not cover failure as a result of wear, misuse, use of incorrect accessories or a failure to fully follow the guidelines in this instruction manual. You will be required to present a proof of purchase in order to make a warranty claim. The warranty is valid for the original purchaser of this unit only and is not transferrable.