

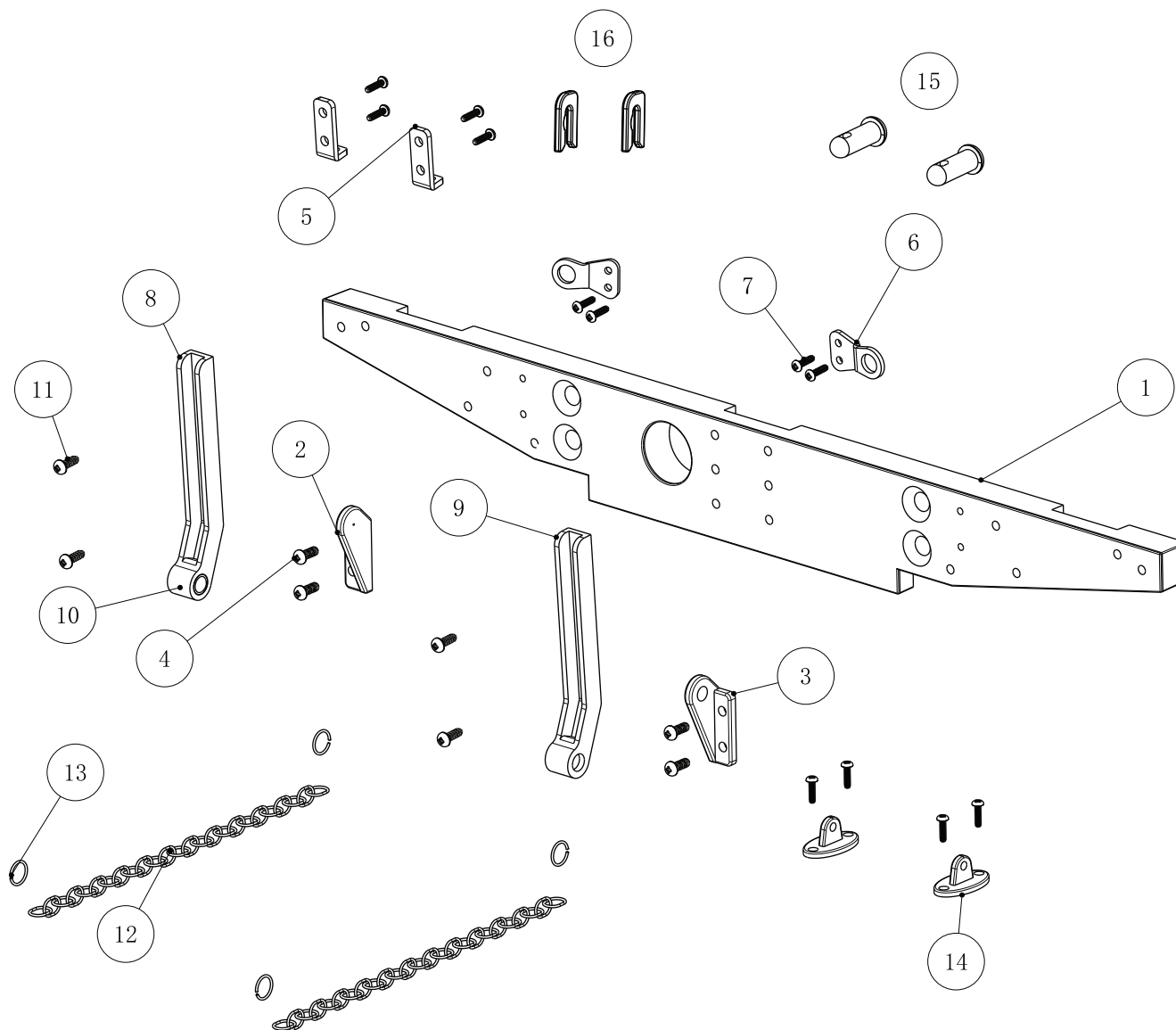
Drop Down Tailgate Conversion Kit for Series Land Rover® #BRX02407

Difficulty Level: ★★☆☆☆

INSTALLATION MANUAL

Parts Included: Qty.

(1) Rear Alum Bumper for Drop Down Tailgate	1
(2) Alum Lower Tailgate Hinge L	1
(3) Alum Lower Tailgate Hinge R	1
(4) M1.5x4 RS Screw	4
(5) Alum Tailgate Anchor	2
(6) Alum Eye Tailgate Latch	2
(7) ST1.2x4 RS Screw	10
(8) Alum Upper Tailgate Hinge L	1
(9) Alum Upper Tailgate Hinge R	1
(10) D3x4 Spring Plunger	2
(11) ST1.5x4 RS Screw	4
(12) Chain 75mm	1
(13) 4x4 Metal Split Ring	4
(14) Alum Bed Anchor	2
(15) Alum Tailgate Latch Pin	2
(16) Alum Tailgate Lock	2



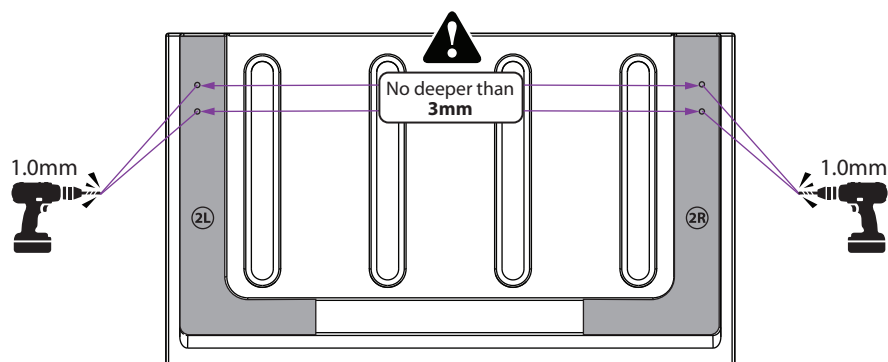
Optional: Apply Modeling Filler

For a cleaner finish, apply modeling filler to cover any extra or unused holes on the tailgate or bumper. Smooth and sand as needed.

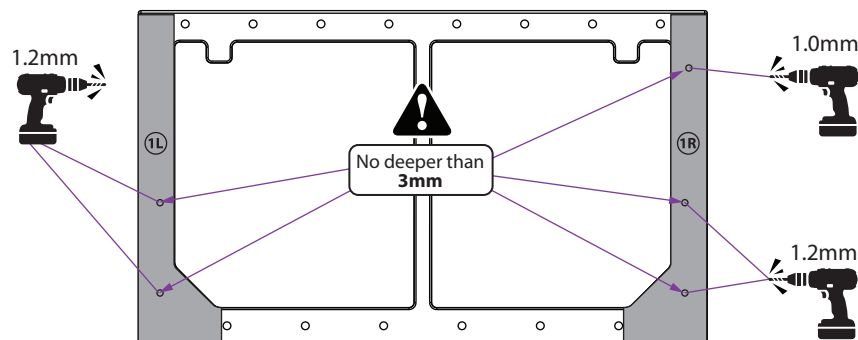
Drop Down Tailgate Conversion Kit for Series Land Rover® #BRX02407

Difficulty Level: ★★☆☆☆

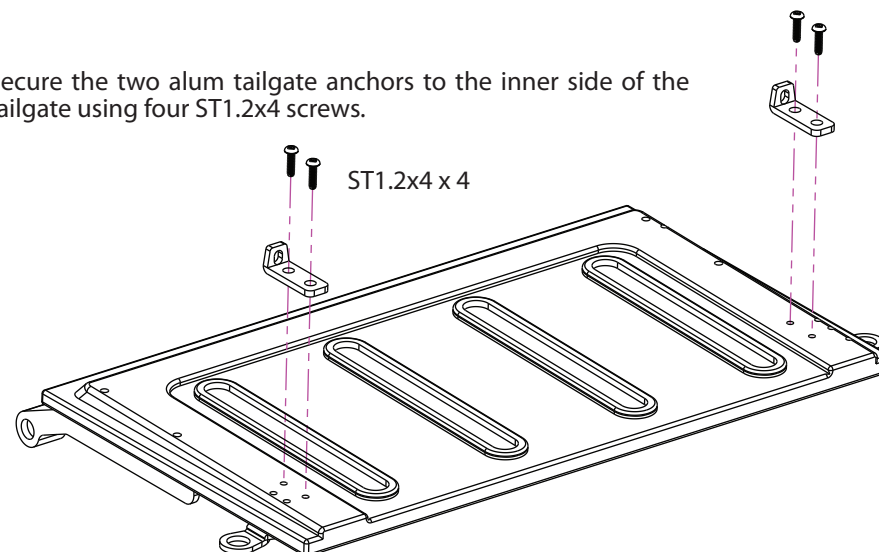
1. Cut out the sticker guides as provided in the kit. Align and attach the sticker guide to the inner side of the tailgate, ensuring the outer guidelines match the tailgate edges.
2. Using the 1mm drill bit, drill four holes at the locations marked on the inner tailgate sticker guide. Drill each hole no deeper than 3 mm to prevent breaking through.



3. Attach the sticker guide to the outer side of the tailgate, aligning it with the tailgate edges. Drill four 1.2mm holes for the upper hinges at the marked locations. Drill one 1mm hole at the indicated location for the latch. Drill each hole no deeper than 3 mm to prevent breaking through.

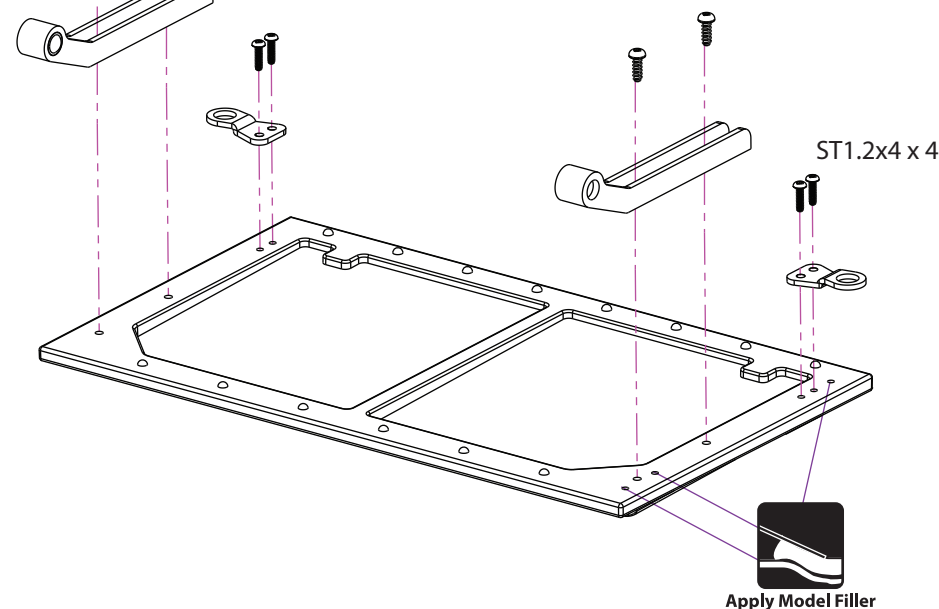


4. Secure the two alum tailgate anchors to the inner side of the tailgate using four ST1.2x4 screws.



ST1.5x4 x 4

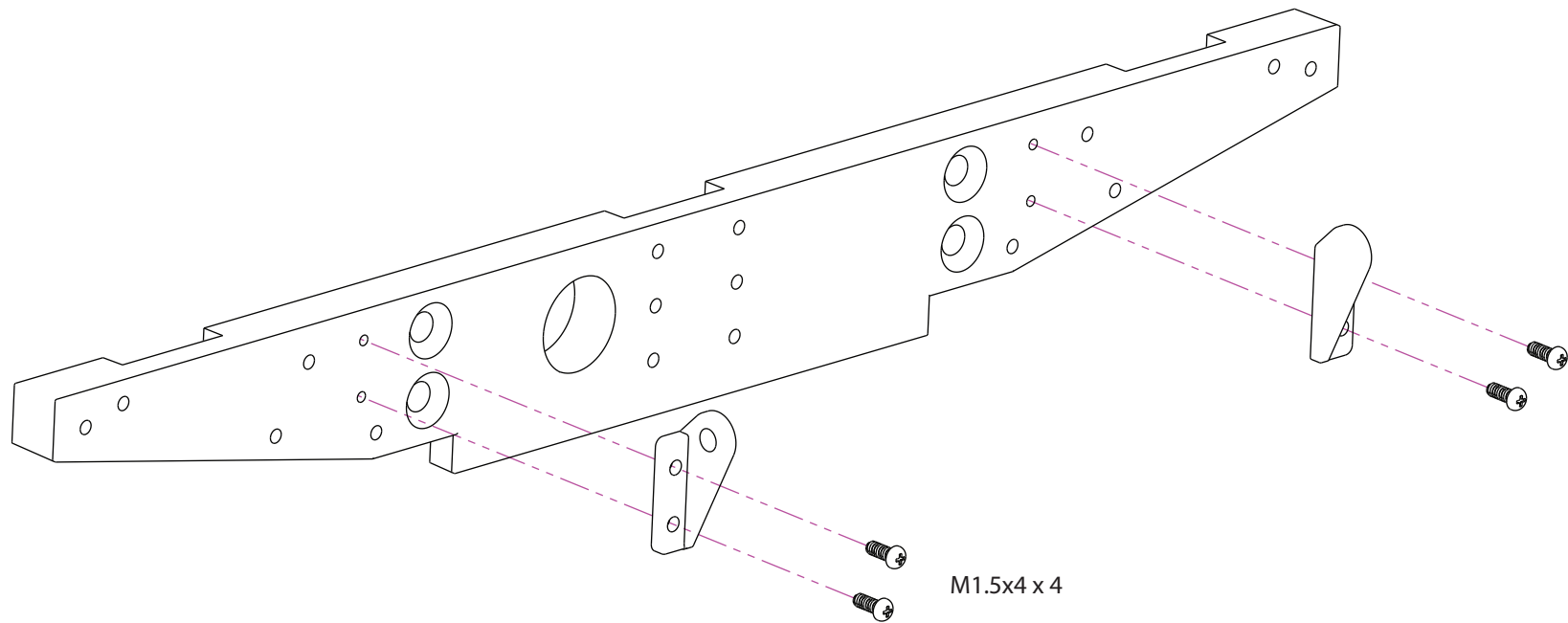
5. Secure the alum upper tailgate hinge to the outer side of the tailgate using four ST1.5x4 screws. Remove the existing plastic eye tailgate latch and replace it with the two aluminum eye tailgate latches using four ST1.2x4 screws.



Drop Down Tailgate Conversion Kit for Series Land Rover® #BRX02407

Difficulty Level: ★★☆☆☆

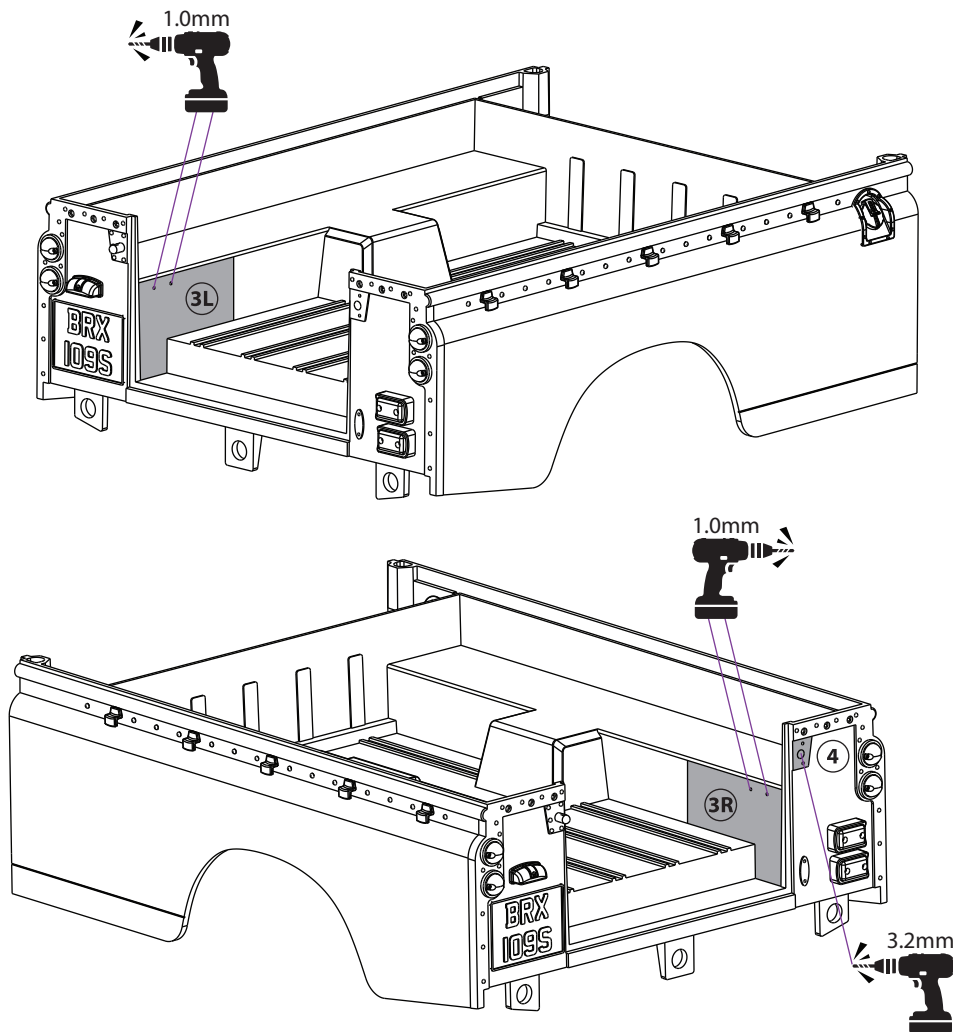
6. Secure the two alum lower tailgate hinges to the bumper using four M1.5x4 screws as indicated.



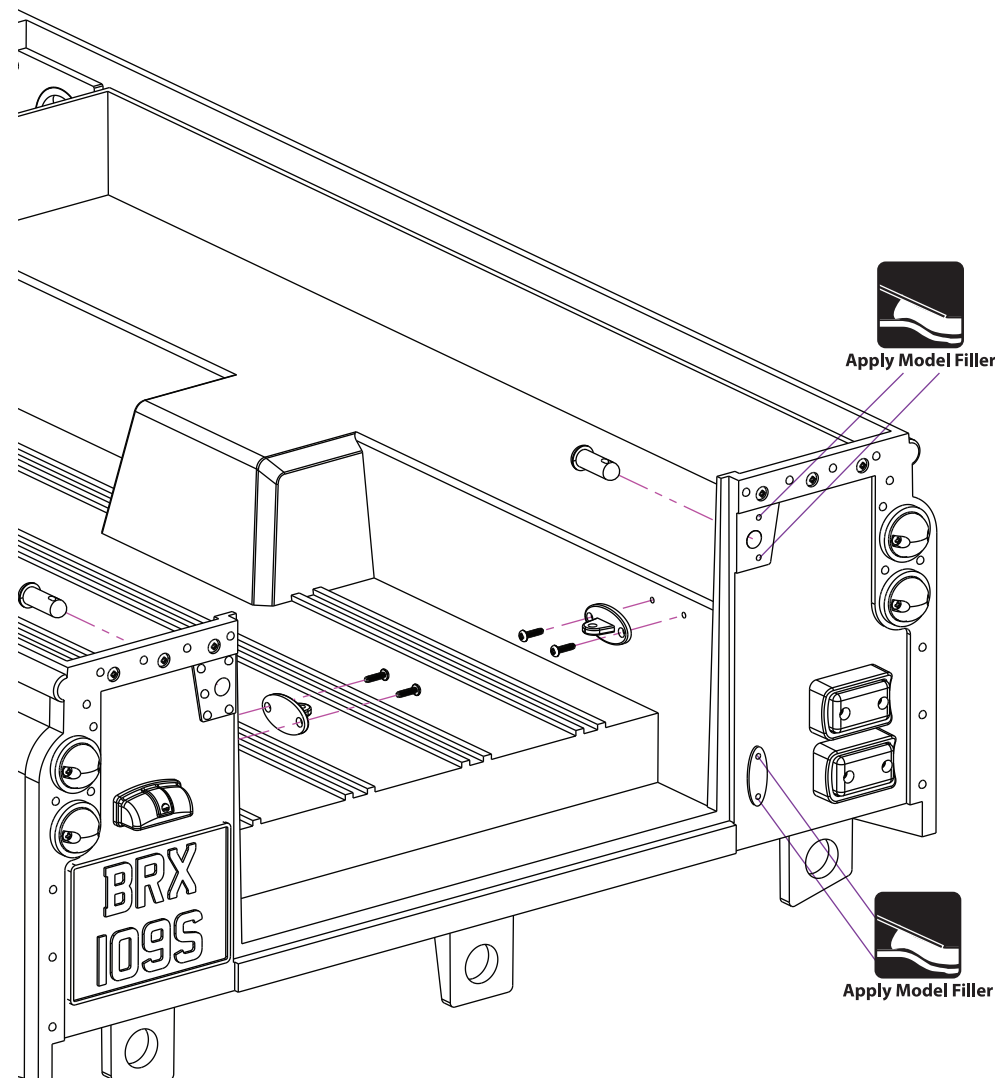
Drop Down Tailgate Conversion Kit for Series Land Rover® #BRX02407

Difficulty Level: ★★☆☆☆

7. Attach the rear bed sticker to the designated locations on the rear bed. Drill four 1mm holes at the marked locations on the sticker. Avoid drilling through to the outer side of the rear bed.



8. Use the 3.2mm drill bit to drill one hole completely through for the alum tailgate latch pin as indicated.

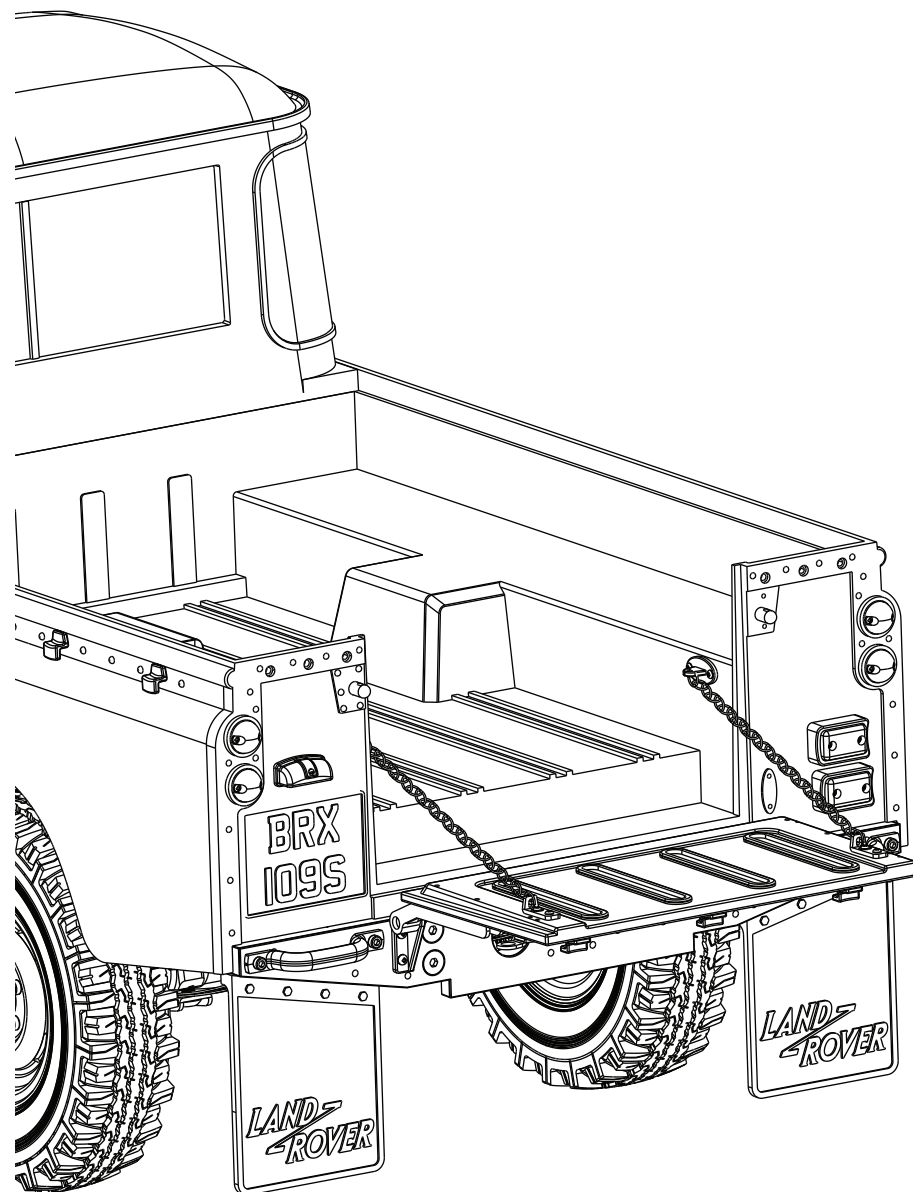
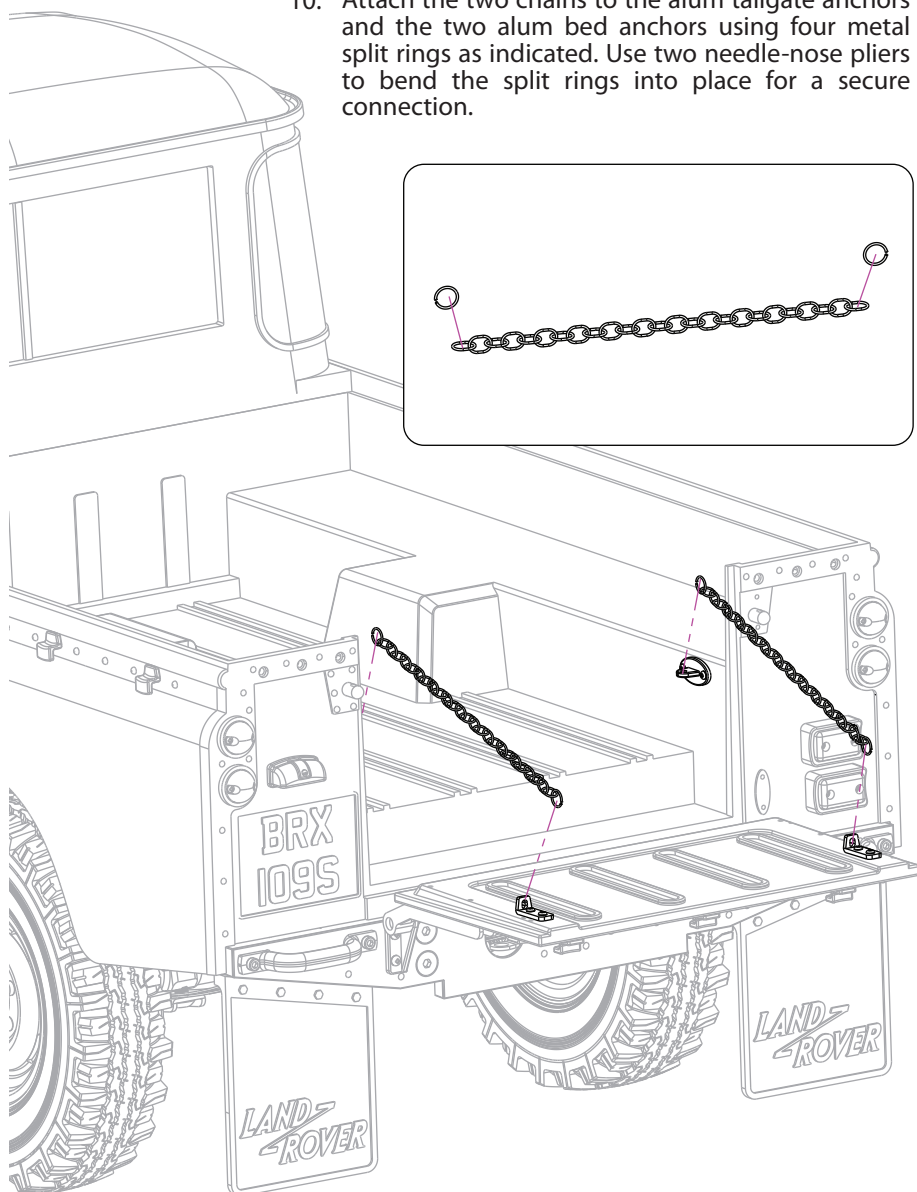


9. Secure the alum bed anchors to the rear bed using four ST1.2x4 screws. Remove the plastic tailgate latch pin and replace with the two alum tailgate latch pins.

Drop Down Tailgate Conversion Kit for Series Land Rover® #BRX02407

Difficulty Level: ★★☆☆☆

10. Attach the two chains to the alum tailgate anchors and the two alum bed anchors using four metal split rings as indicated. Use two needle-nose pliers to bend the split rings into place for a secure connection.



Drop Down Tailgate Conversion Kit for Series Land Rover® #BRX02407

Difficulty Level: ★★☆☆☆

11. Insert the two alum tailgate locks to secure the tailgate.

