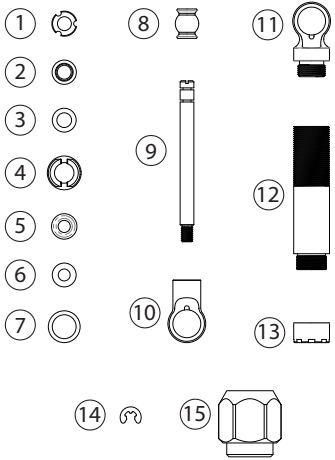
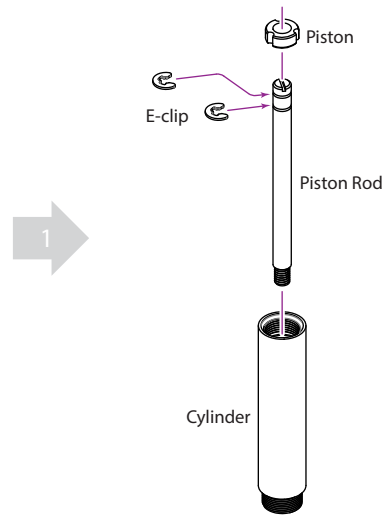


INSTALLATION MANUAL

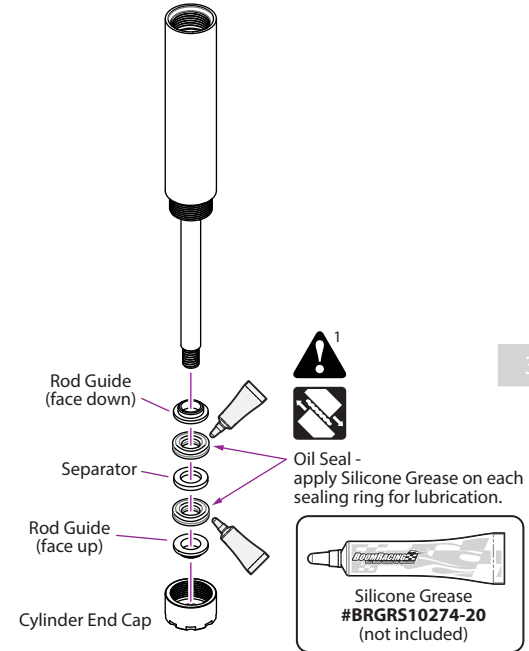
| Parts Included: | Qty. |
|----------------------------------|------|
| (1) Piston | 2 |
| (2) Rod Guide | 4 |
| (3) Separator | 2 |
| (4) Pivot Retainer (#BRSHJR) | 4 |
| (5) Oil Seal | 4 |
| (6) Bump Stop | 2 |
| (7) Cylinder seal | 2 |
| (8) Pivot Ball (#BRW750310) | 4 |
| (9) Piston Rod | 2 |
| (10) Lower Mount | 2 |
| (11) Upper Mount | 2 |
| (12) Cylinder | 2 |
| (13) Cylinder End Cap | 2 |
| (14) E-clip | 4 |
| (15) Pivot Ball Tool (#BRT10053) | 1 |



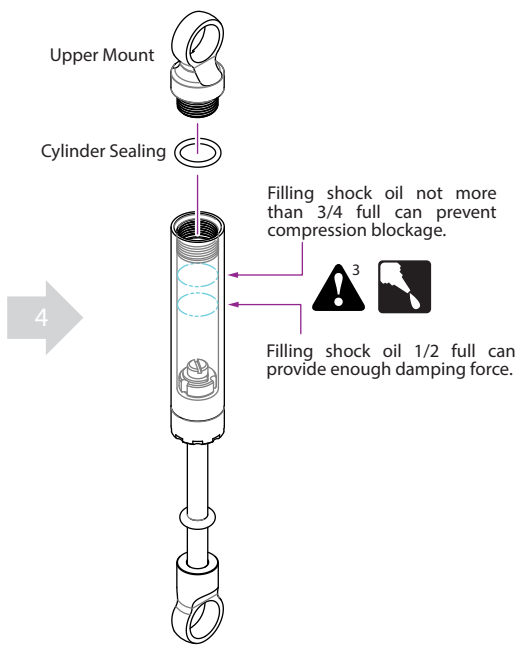
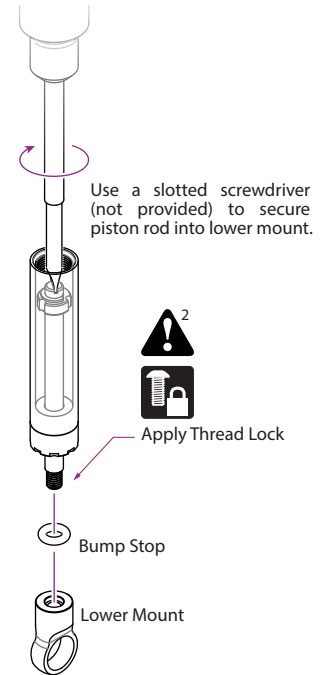
1-3
Pay attention to cautions 1, 2 and 3.



2



3



5

