

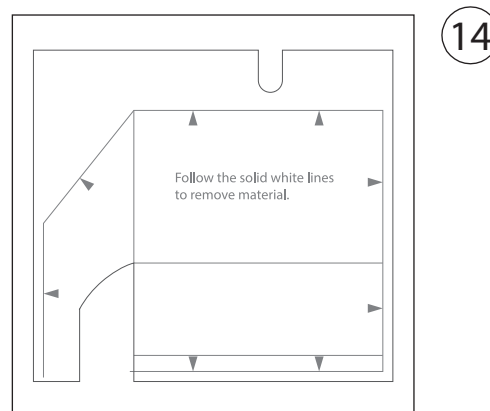
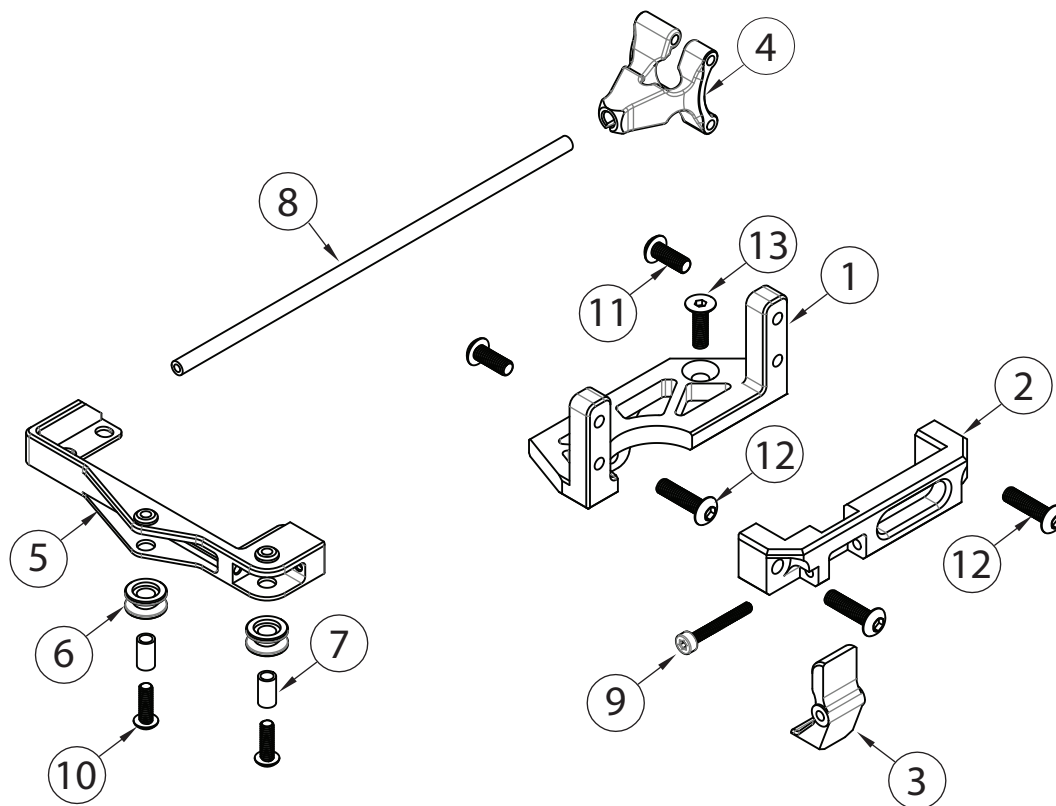
# Servo Winch Mount Kit for BRX01 & BRX01 AWB (#BRLC70227)

Difficulty Level: ★☆☆☆☆

## INSTALLATION MANUAL

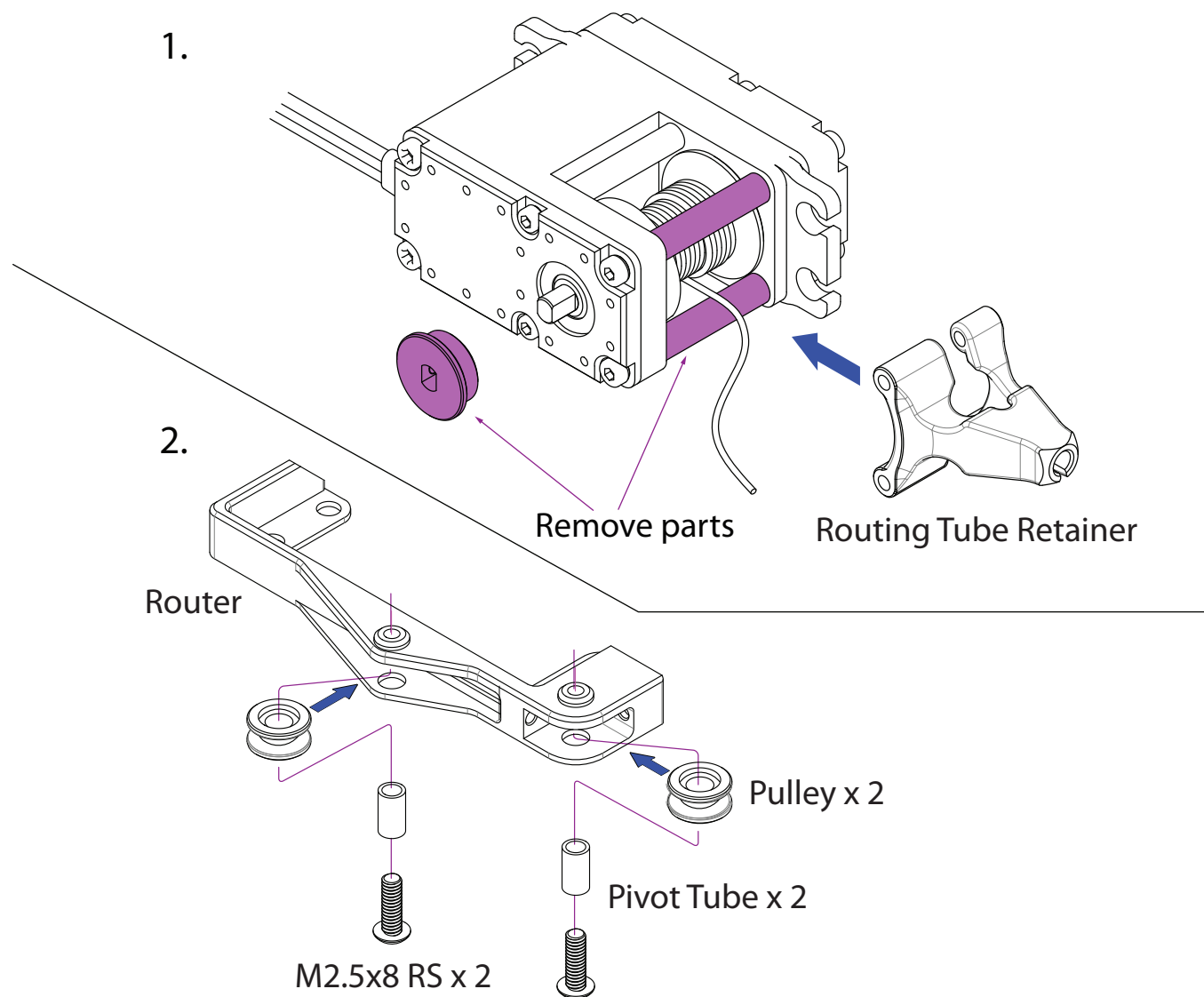
### Parts Included: Qty.

(1) Winch Mount	1
(2) Switch Retainer	1
(3) Switch	1
(4) Routing Tube Retainer	1
(5) Router	1
(6) Pulley	2
(7) Pivot Tube	2
(8) Routing Tube	1
(9) M2x16 SC Screw #BRASCH2016	1
(10) M2.5x8 RS Screw #BRASBH2508	2
(11) M3x8 RS Screw #BRASBH3008	2
(12) M3x12 RS Screw #BRASBH3012	3
(13) M3x10 RS Screw #BRASFH3010	1
(14) Interior Cut-out Guideline	1



# Servo Winch Mount Kit for BRX01 & BRX01 AWB (#BRLC70227)

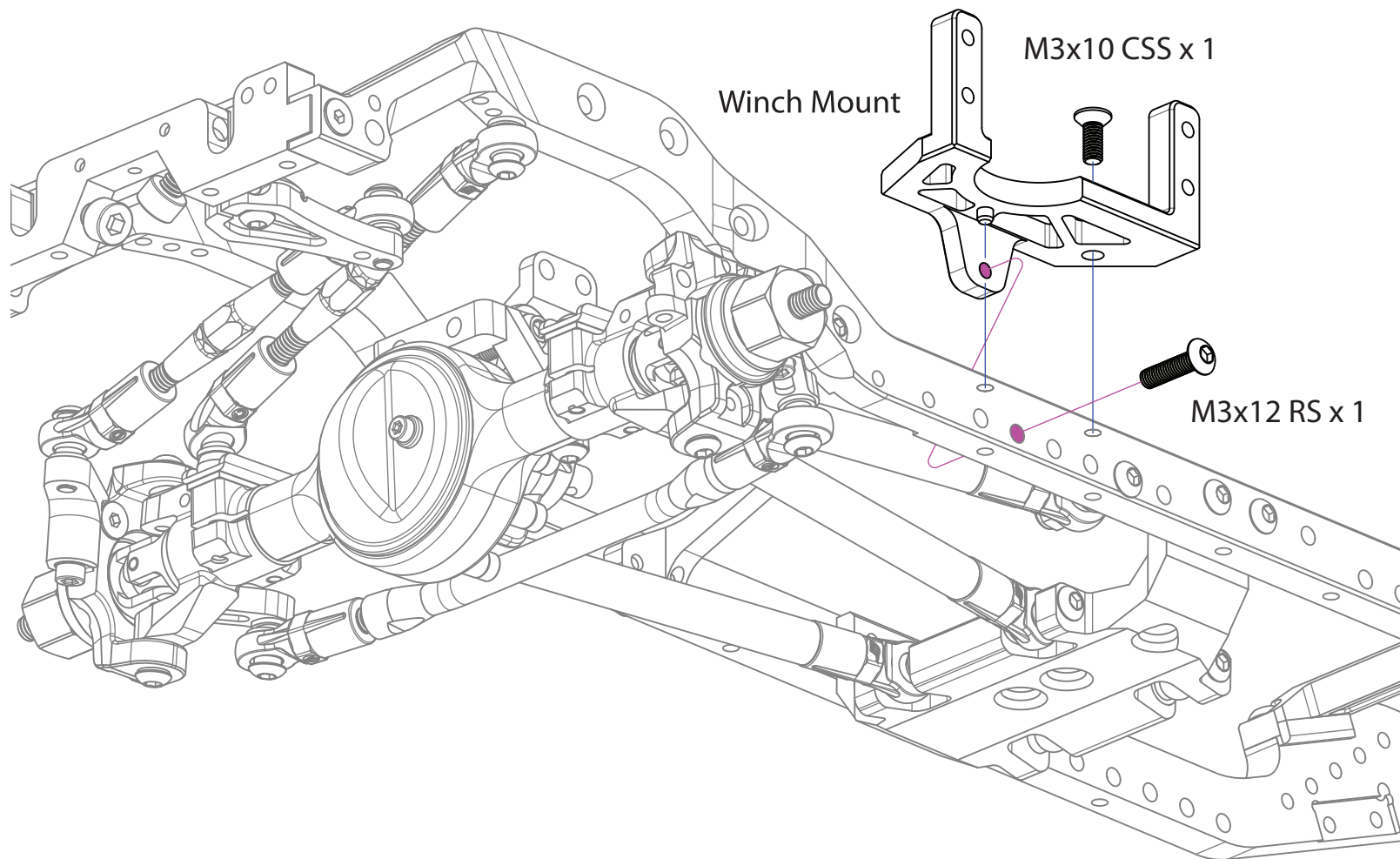
Difficulty Level: ★☆☆☆☆



## Servo Winch Mount Kit for BRX01 & BRX01 AWB (#BRLC70227)

Difficulty Level: ★☆☆☆☆

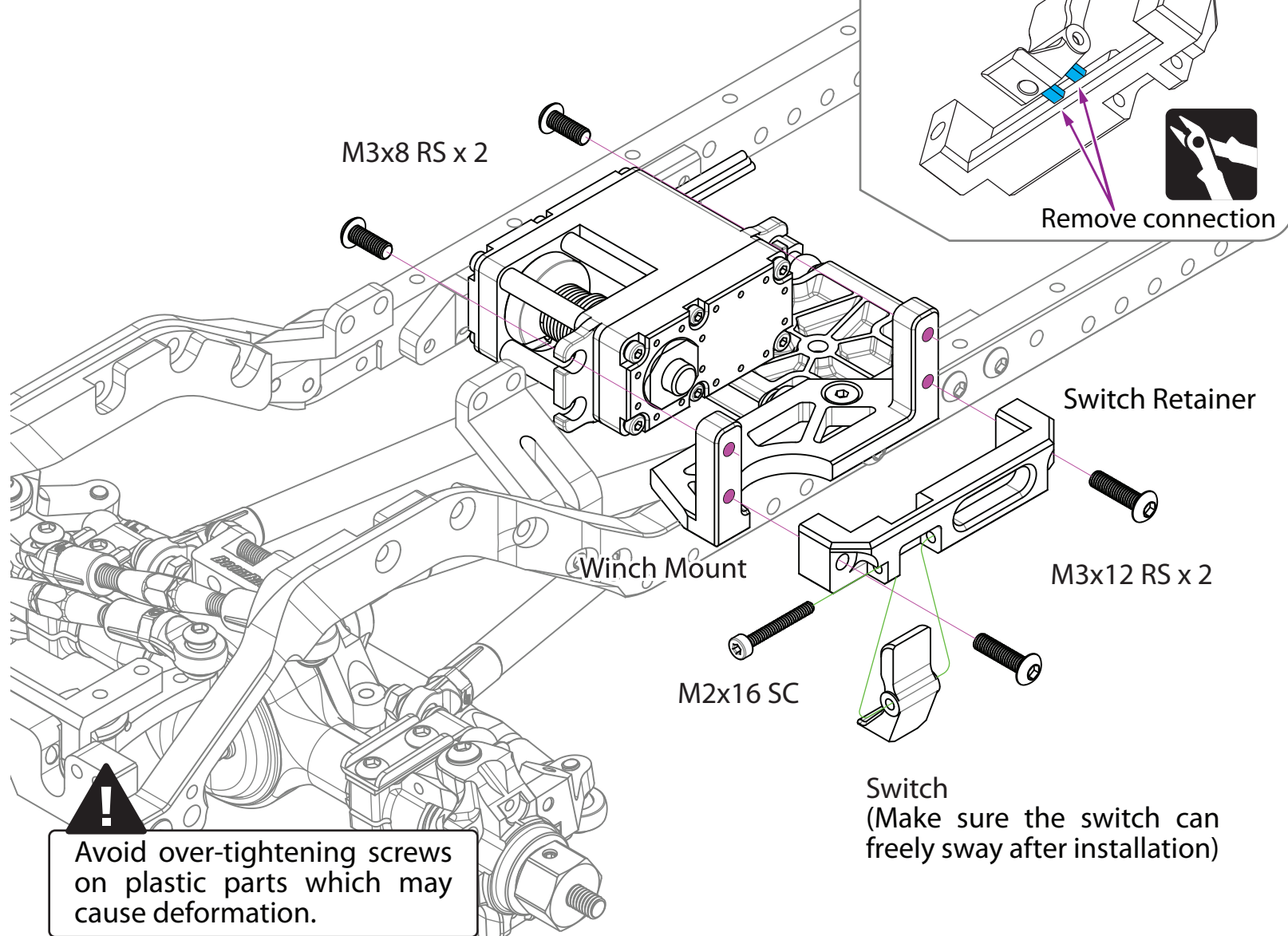
3.



## Servo Winch Mount Kit for BRX01 & BRX01 AWB (#BRLC70227)

Difficulty Level: ★☆☆☆☆

4.

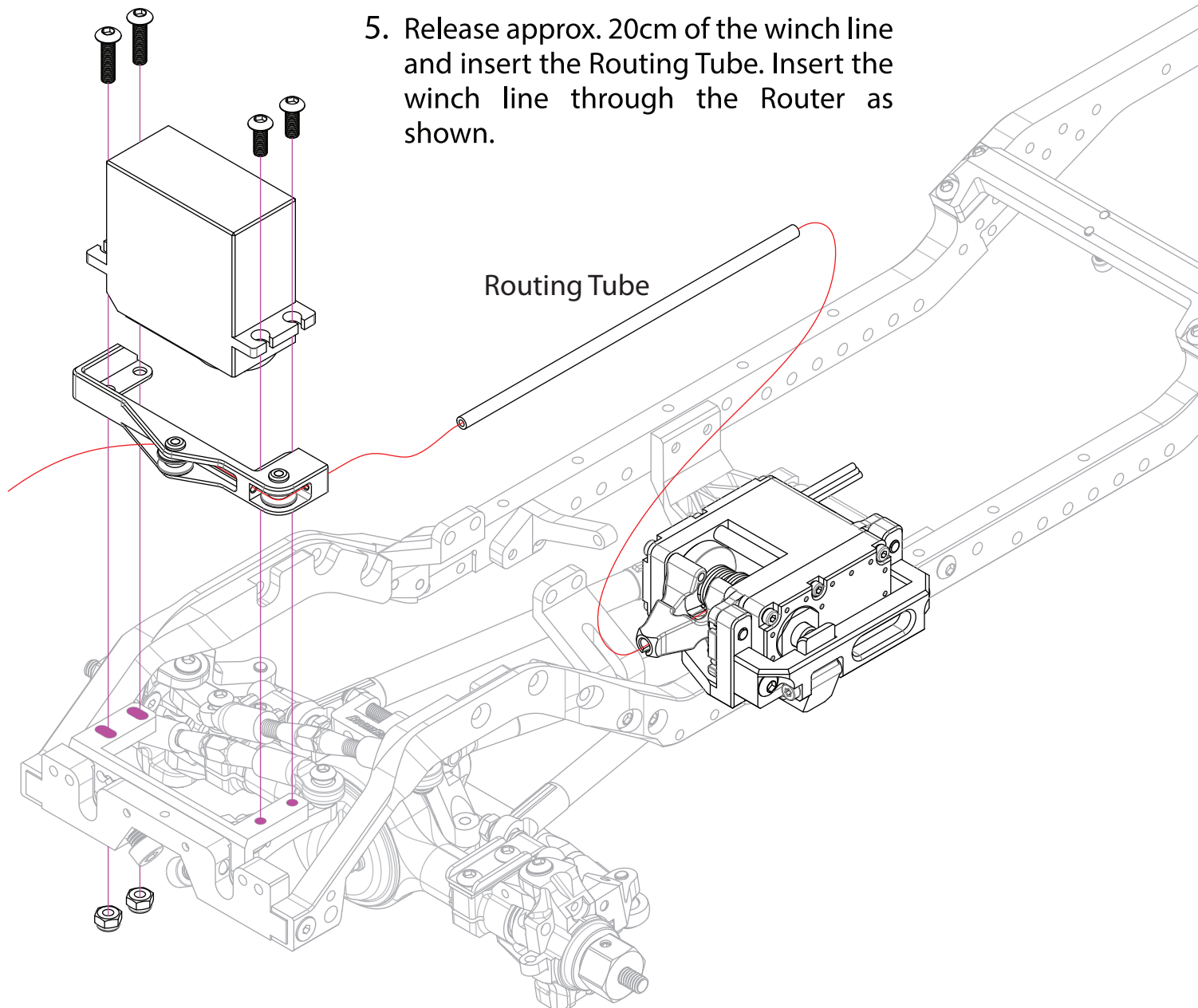




## Servo Winch Mount Kit for BRX01 & BRX01 AWB (#BRLC70227)

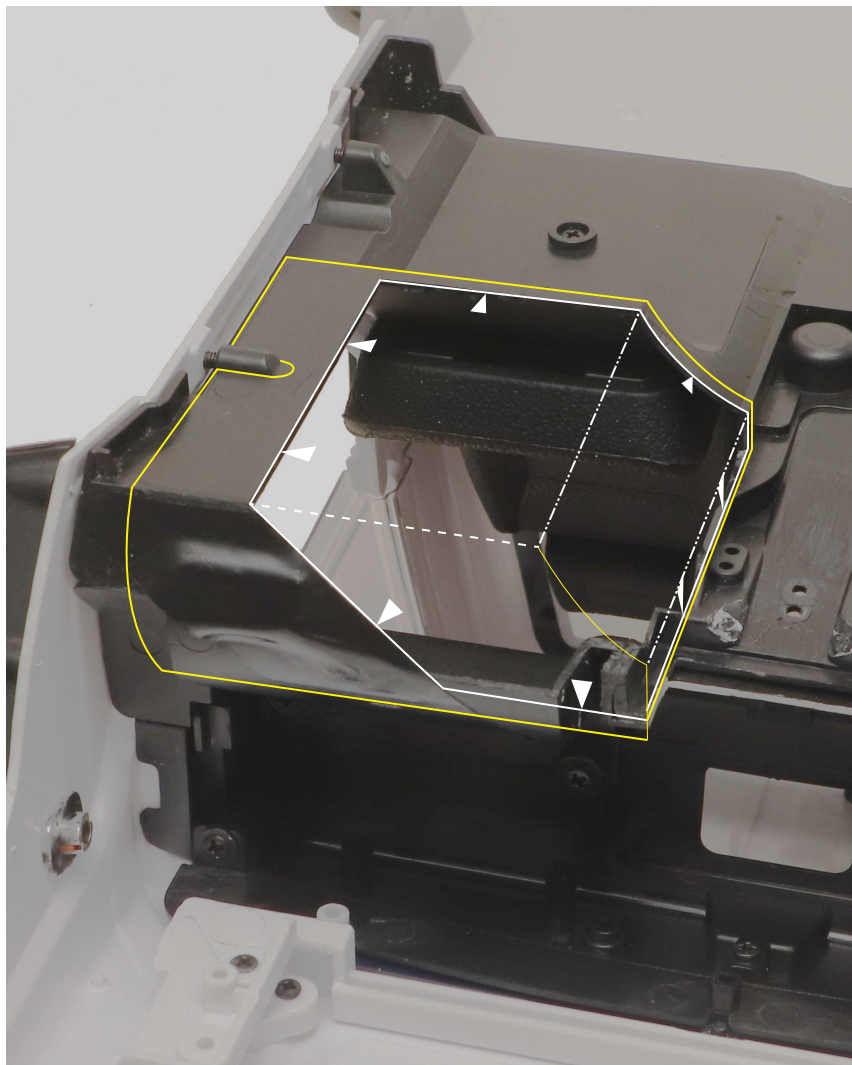
Difficulty Level: ★★☆☆☆

5. Release approx. 20cm of the winch line and insert the Routing Tube. Insert the winch line through the Router as shown.

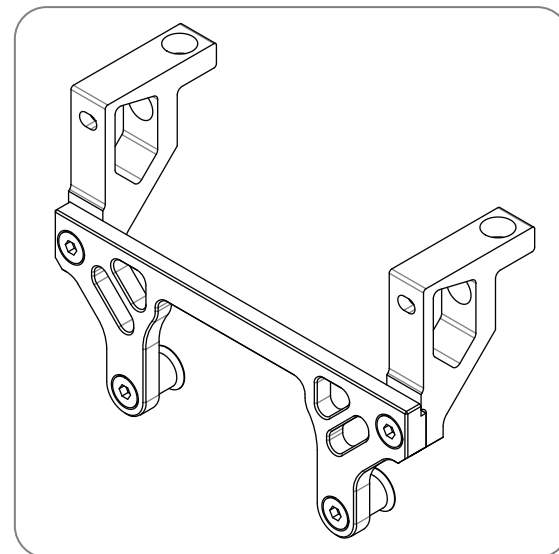


## 6. Interior Cut-Out Guideline

\*For BRX01 with LC70 body



## Recommended Option #BRLC7098



An optional LC70 CNC hardbody mount is required to maintain the quick release feature and winch line directly passing through.